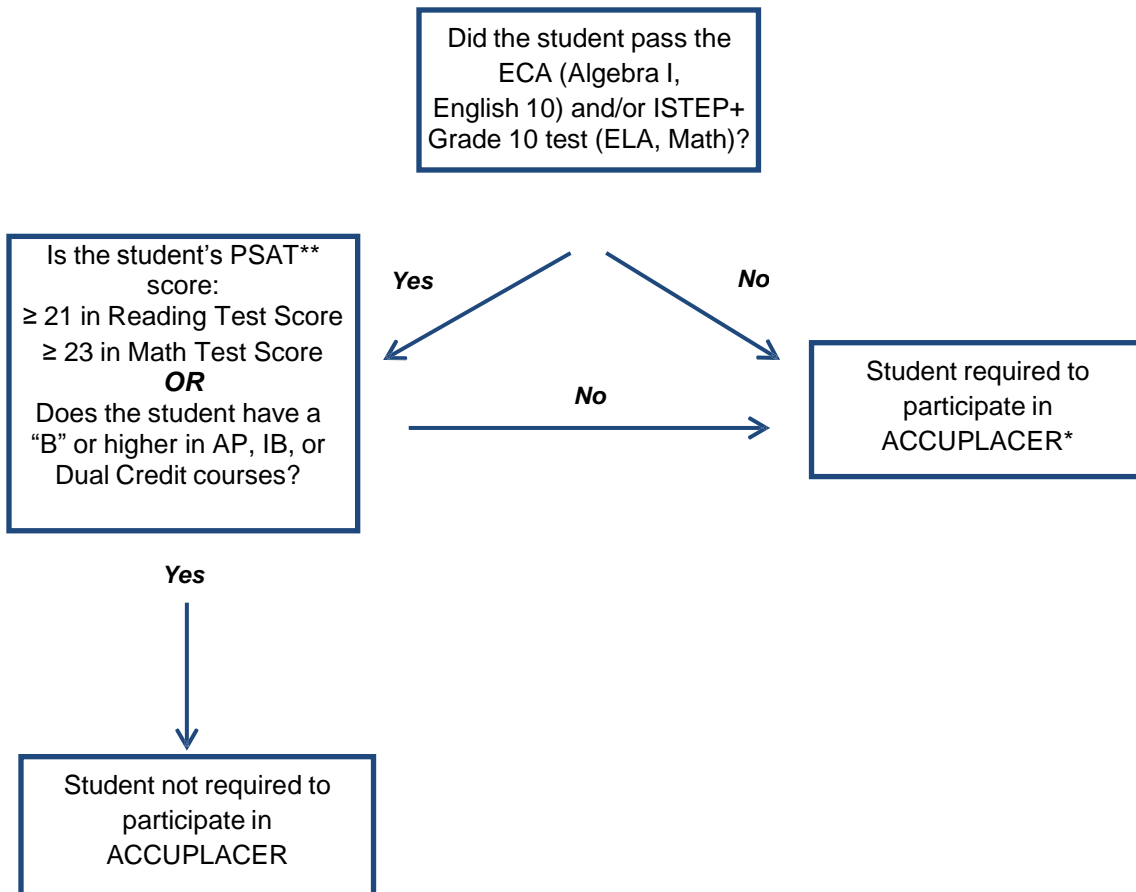


ACCUPLACER Participation Criteria and Implementation Guidance 2016-17 Guidance

Part 1 – Grade 11 Students



ACCUPLACER Non-Participation Thresholds*	
<p><u>ELA</u></p> <ul style="list-style-type: none"> • Old SAT Reading Score ≥ 460 • New SAT Reading Test Score ≥ 25 • ACT Reading Score ≥ 18 • ACT English Score ≥ 17 • ACCUPLACER Classic Version: Reading ≥ 76 • ACCUPLACER Custom Version: Reading Diagnostic ≥ 69 	<p><u>Math</u></p> <ul style="list-style-type: none"> • Old SAT Math Score ≥ 460 • New SAT Math Section Score ≥ 500 • ACT Math Score ≥ 18 • ACCUPLACER Classic/Custom Version: Elementary Algebra ≥ 92

*Students are required to participate in ACCUPLACER **unless** their results or score on a national assessment of college and career readiness meets the thresholds determined by the Commission for Higher Education and the Indiana Department of Education in consultation with higher education institutions.

**Students without a PSAT score are required to participate in ACCUPLACER.